

AP Subsea video surveyor - data overlaying video recorder

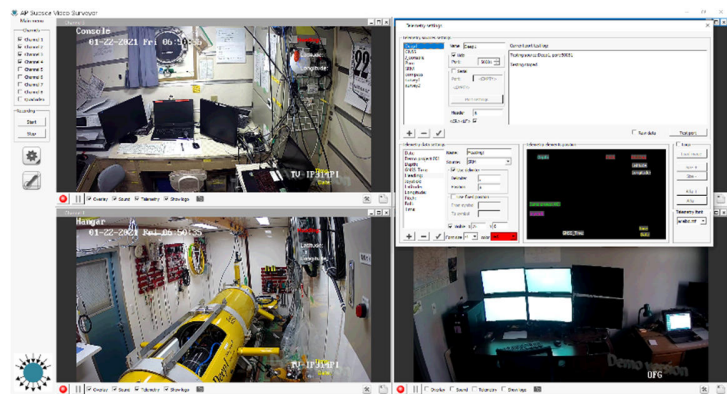
AP Subsea video surveyor is a Windows OS based app to show and record video, audio and data. Data can be conveniently parsed and allocated on the screen.

Features:

- IP cameras can be located on the WAN and/or LAN
- MJPEG and H.264 (RTSP protocol) sources to view and record
- Up to 8x video streams to show or record
- Quad view
- Main camera view can be on separate monitor (multi window)
- Recording individual camera stream or all. Snapshots
- Synchronous recording start/stop
- Configuring parser and overlay for data inputs
- Video can be watermarked with your company logo



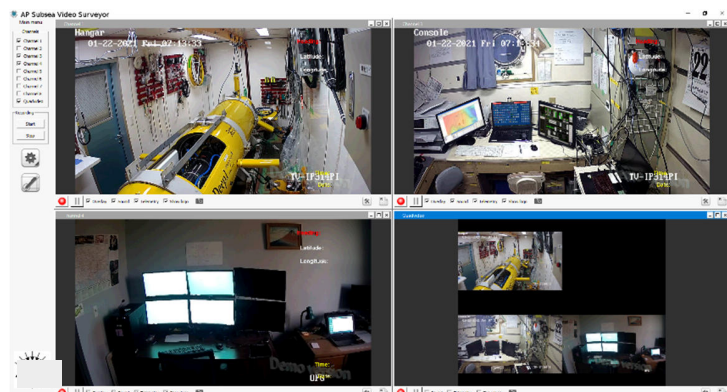
Main camera view



Telemetry parser and overlay configuration

Application area:

- Remotely Operated Vehicles
- Autonomous surface vehicles
- Support mission control centers
- Port control rooms
- Seagoing vessels CCTV
- Drones
- Globally spread video systems
- Etc.



Multiview and quad modes

Hardware requirements:

CPU Intel i7, RAM 16Gb, dedidated GPU, SSD drive

If you don't see functionality you need, Software customisation is available

AP subsea Inc.

Email: sales@apsubsea.com

support@apsubsea.com

Web: <http://www.apsubsea.com>

Phone: +1 604 363 38 62

Office address:

302-11295, Pazarena Place, Maple Ridge, BC

Canada V2X 4K9