

*Switch (relay) board (SWB) v1*

**8x independently controlled ON/OFF power channels with adjustable current draw**

Application:

- Powering sensors (8x 12VDC channels)

Features:

- Protecting subsystems from electrical damage by Electronic High Speed Short circuit protection on every channel (Smart fuse)
- Current set max limit (individually per channel)
- Current load measuring on every channel

Compatible to **controller DMX**

Input voltage: 12 VDC ±5%, 2x Inputs

Power In indication: green LED, individual per 4x channel group

I/O isolation: inbuilt 1000 VDC

Input / Output connectors: 100 V @ 2A rated

Output voltage: 12 VDC, 8x channels

Max current  $I_{set}$ : 0 ÷ 2 A per channel (pre-set or adjustable on the go by **controller DMX**)

2x Power In connector type: **B2B-PH-K-S**, pin 1 (V+), cable header **PHR-2**

8x Power control connectors: **B7B-PH-K-S**, cable header **PHR-7**

- pin 1 – Enable (DI)
- pin 2 – Reset (DI)
- pin 3 – Error (DO)
- pin 4 –  $I_{sens}$  (AO)
- pin 5 –  $I_{set}$  (AI)
- pin 6 –A. Gnd (AI or AO)
- pin 7 –D. Gnd (DI or DO)

Pin 5 value (V) to define  $I_{set}=(0.52+I_{set} *0.185)*4$

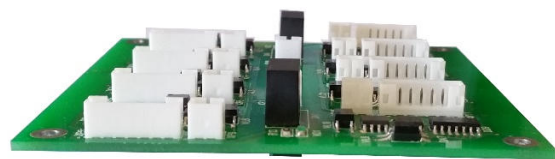
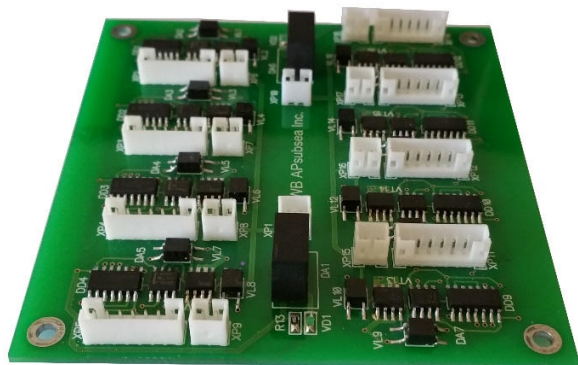
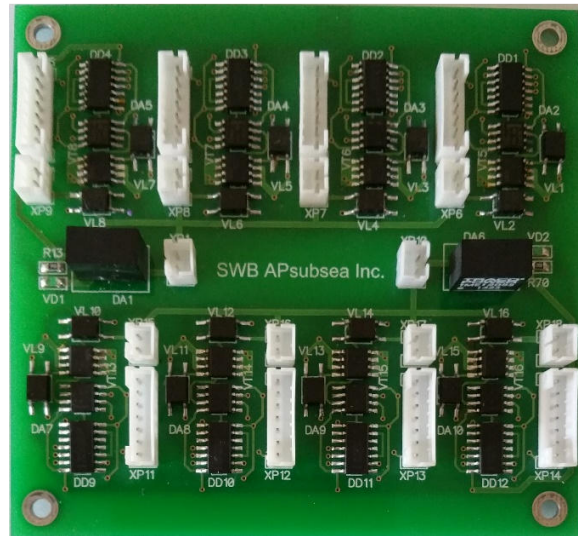
$I_{set}=(Pin5/4 - 0.52)/0.185$

Pin 4 value (V) to define  $I_{sens}=0.52+I_{sens} *0.185$

$I_{sens}=(Pin4-0.52)/0.185$

8x switchable Power Out connector type:

**B2B-PH-K-S**, pin 1 (V+), cable header **PHR-2**



SWB board dimensions (W x L x H), mm:

**90 x 96 x 12** (other form-factor by demand)

Operating temperature: -40 ÷ +75 °C

Mounting: 4x M3 screws

**AP subsea Inc.**

**Email:** [sales@apsubsea.com](mailto:sales@apsubsea.com)

[support@apsubsea.com](mailto:support@apsubsea.com)

**Web:** <http://www.apsubsea.com>

**Phone:** +1 604 363 38 62

**Office address:**

302-11295, Pazarena Place, Maple Ridge, BC, Canada V2X 4K9